

# DVS 2U EXEC-P1000 Pro



## Overview

Our EXEC series spans a wide variety of specifications designed to cover many different roles in an AV installation. These include administration and management systems, control systems, web servers, databases and content management servers.

The DVS 2U EXEC-P1000 Pro is a mid-range control and production server. The dedicated professional grade graphics card is ideal for running production or design software for live events or exhibits. The intel-based processors options allow up to 8 cores and threads for demanding single and multi-threaded workloads. The single NVMe M.2 slot allows for blistering fast storage options, and the two 2.5" and two 3.5" drive bays allow for higher capacity and RAID options for storage.

## Specifications

- DVS 2U Rackmount Chassis - 457.2 x 430 x 88.1 (mm) (D x W x H)
- 460 Watt PSU - 100 - 240V~, 6.5 - 3.5A, 50 - 60Hz
- Intel Z390 Chipset Motherboard
- Intel Processor ( 4, 6 or 8 core )
- 4 / 8 / 16 / 32GB DDR4 Dual Channel Memory
- nVidia Quadro P1000 Graphics Card ( Up to 4 concurrent displays )
- NVMe M.2 Storage ( Up to 2TB )
- 2 x 2.5" SATA Storage ( Supports RAID 0 and RAID 1 )
- 2 x 3.5" SATA Storage ( Supports RAID 0 and RAID 1 )

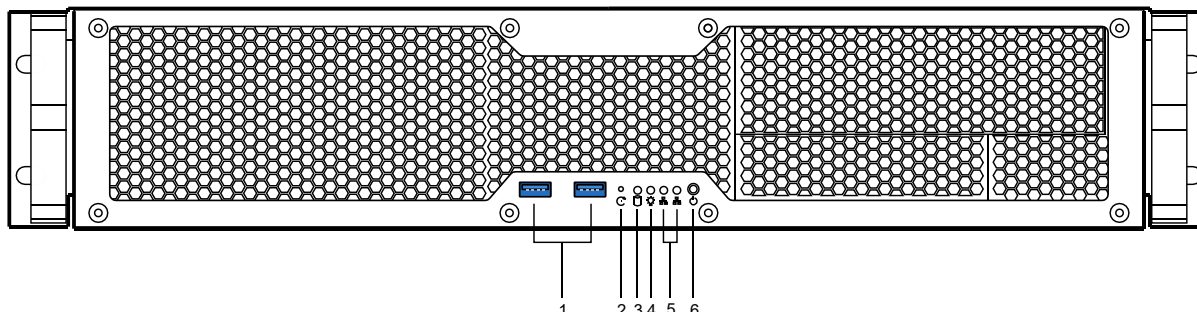
- 2 x Gigabit Network Ports
- Intel® 802.11ac WiFi Module
- Operating System - Windows Enterprise IoT LTSC 2019 or Windows 10 Pro

## Graphics Card

Chipset	Quadro P1000
Microarchitecture	Pascal
Memory	4GB GDDR5
Memory Bus	128 Bit
Interface	PCIe 3.0 (x16)
Microsoft DirectX Support	12 API
HDCP Ready	Yes
Maximum Concurrent Displays	4 Displays
Maximum Digital Resolution	5120x2880 @ 60Hz
Outputs	4 x Mini DisplayPort 1.4
EDID Emulation	Yes
Sync Module Supported	No

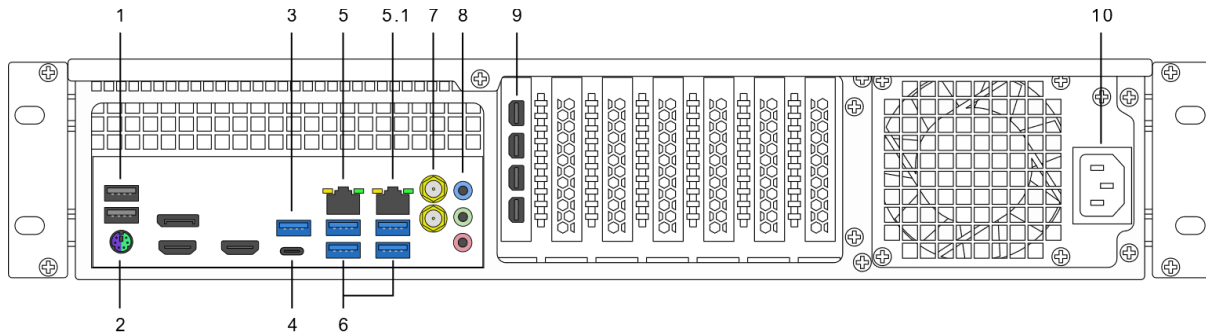
## Connectors

### Front Panel



1. **USB 2.0 Ports**
2. **System Reset Switch**
3. **HDD Activity LED**
4. **Power LED**
5. **LAN1 and LAN2 Activity LED.** Not connected
6. **Power Button**

## Rear Panel



1. **USB 2.0 Ports**
2. **PS/2 Mouse / Keyboard Port**
3. **USB 3.1 Gen2 Type-A Port**
4. **USB 3.1 Gen2 Type-C Port**
5. **LAN RJ-45 Port.** 5: (Intel® I219V), 5.1: (Intel® I211AT)

## LAN port LED Indications

Activity / Link LED		Speed LED		Activity Link LED    Speed LED  LAN port
Status	Description	Status	Description	
Off	No link	OFF	10Mbps connection	
On	Linked	ORANGE	100Mbps connection	
Blinking	Data activity	GREEN	1Gbps connection	

6. **USB 3.1 Gen2 Type-A Ports.**
7. **Antenna Ports**
8. **Audio Ports.**
  - a. Line In ( Light Blue )
  - b. Front Speaker ( Lime )
  - c. Microphone ( Pink )
9. **Mini DisplayPort 1.4 ( x 4 )**
10. **Power IEC.** Mains Power Input: 100 – 240V~, 6.5 – 3.5A, 50 – 60Hz

Note\* On board display connections are not available for use.

## Internal Expansion

- 1 x M.2 Socket 3 with M key, type 2230/2242/2260/2280 storage devices support (both SATA & PCIe x4 Gen3 mode)
- 2 x 2.5" Drive bays ( SATA ), Supports RAID 0 and RAID 1
- 2 x 3.5" Drive bays ( SATA ), Supports RAID 0 and RAID 1

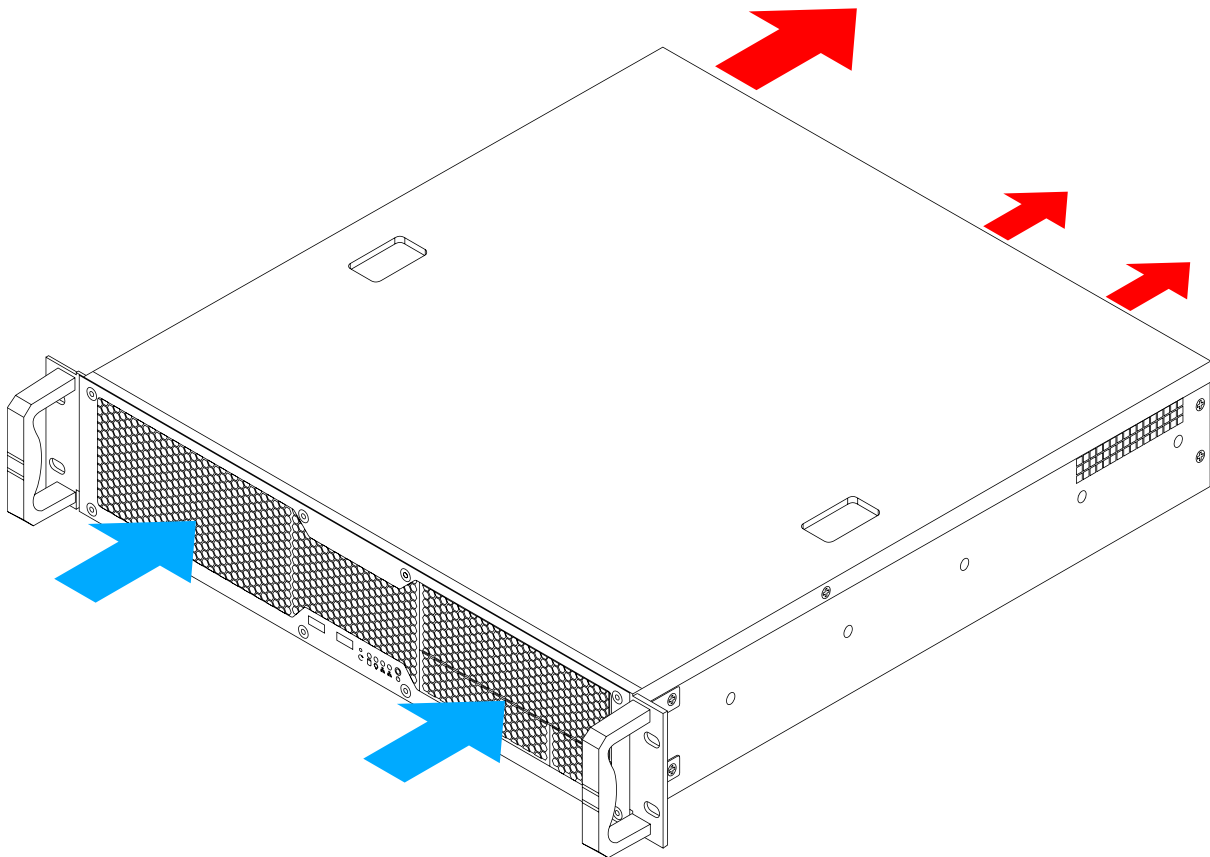
## Chassis Specification

The DVS 2U EXEC-P1000 Pro is a two rack unit high chassis, designed to fit in standard 19" rack cabinets. Optional rack rails are available for the system.

Colour	Silver, Black Front
Dimension (D x W x H)	457.2 x 430 x 88.1 (mm) , 18" x 16.9" x 3.5"
Drive Bay	<ul style="list-style-type: none"> <li>Exposed: 1 x 5.25" + 1 x 3.5"</li> <li>Internal: 2 x 3.5", 2 x 2.5"</li> </ul>

## Ventilation

The 2U EXEC-P1000 Pro is a rack mountable server, all cool air intake is from the front of the chassis and all hot air is actively expelled from the rear of the chassis. The chassis is designed to be in a climate-controlled server room environment.



## Supported Video Formats

The system comes with Windows installed as standard. Windows includes Windows Media Player by default. As of Windows Media Player 12 the following video formats are supported:

- Windows Media formats (.asf, .wma, .wmv, .wm)
- Windows Media Metafiles (.asx, .wax, .wvx, .wmx)
- Windows Media Metafiles (.wpl)
- Microsoft Digital Video Recording (.dvrms)
- Windows Media Download Package (.wmd)
- Audio Visual Interleave (.avi)
- Moving Pictures Experts Group (.mpg, .mpeg, .m1v, .mp2, .mp3, .mpa, .mpe, .m3u)
- Musical Instrument Digital Interface (.mid, .midi, .rmi)
- Audio Interchange File Format (.aif, .aifc, .aiff)
- Sun Microsystems and NeXT (.au, .snd)
- Audio for Windows (.wav)
- CD Audio Track (.cda)
- Indeo Video Technology (.ivf)
- Windows Media Player Skins (.wmz, .wms)
- QuickTime Movie file (.mov)
- MP4 Audio file (.m4a)
- MP4 Video file (.mp4, .m4v, .mp4v, .3g2, .3gp2, .3gp, .3gpp)
- Windows audio file (.aac, .adt, .adts)
- MPEG2 TS Video file (.m2ts)

*\*Additional video formats can be supported by the installation of additional software.*