

DVS 2U EXEC



Overview

Our EXEC series spans a wide variety of specifications designed to cover many different roles in an AV installation. These include administration and management systems, control systems, web servers, databases and content management servers.

The DVS 2U EXEC is an entry level control and production server. The intel-based processors options allow up to 8 cores with 16 threads for demanding single and multi-threaded workloads. The dual NVMe M.2 slots allow for blistering fast storage options, and the two 2.5" and two 3.5" drive bays allow for higher capacity and RAID options for storage.

Specifications

- DVS 2U Rackmount Chassis - 457.2 x 430 x 88.1 (mm) (D x W x H)
- 460 Watt PSU – 100 – 240V~, 6.5 – 3.5A, 50 – 60Hz
- Intel Z490 Chipset Motherboard
- Intel Processor - 4(8), 6(12) or 8(16) core
- 4 / 8 / 16 / 32GB DDR4 Dual Channel Memory
- 2 x NVMe M.2 Storage (Up to 2TB)
- 2 x 2.5" SATA Storage (Supports RAID 0 and RAID 1)
- 2 x 3.5" SATA Storage (Supports RAID 0 and RAID 1)
- 2 x Gigabit Network Ports (1x from addon card)
- Operating System - Windows Enterprise IoT LTSC 2019 or Windows 10 Pro

Variations

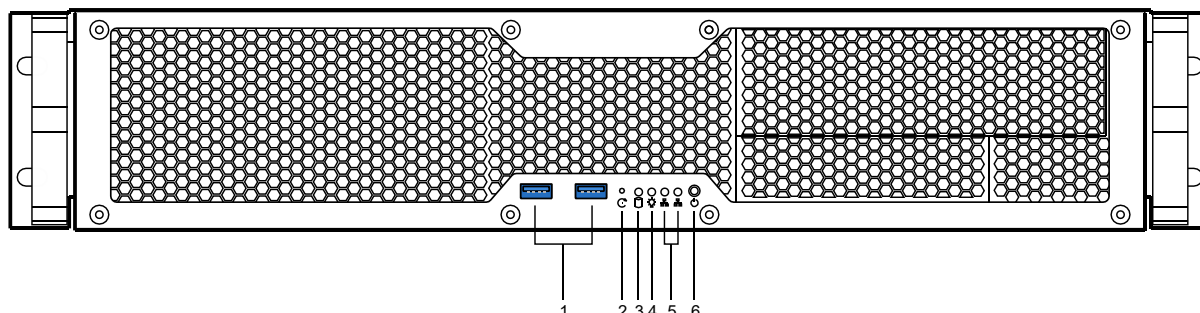
Model Number	HDD Raid	SSD Raid	10Gb Network
2U EXEC			
2U EXEC-RH	Yes		
2U EXEC-RH10G	Yes		Yes
2U EXEC-RS		Yes	
2U EXEC-RS10G		Yes	Yes
2U EXEC-10G			Yes

Graphics Card

Chipset	Intel UHD Graphics 630
Memory	System Shared
Memory Bus	System Shared
Interface	PCIe 3.0 (x1)
Microsoft DirectX Support	12 API
Maximum Concurrent Displays	2 Displays
Maximum Digital Resolution	4096x2304 @ 60Hz (Display Port)
Outputs	1 x HDMI 1.4b, 1 x Display Port 1.4
EDID Emulation	No
Sync Module Supported	No

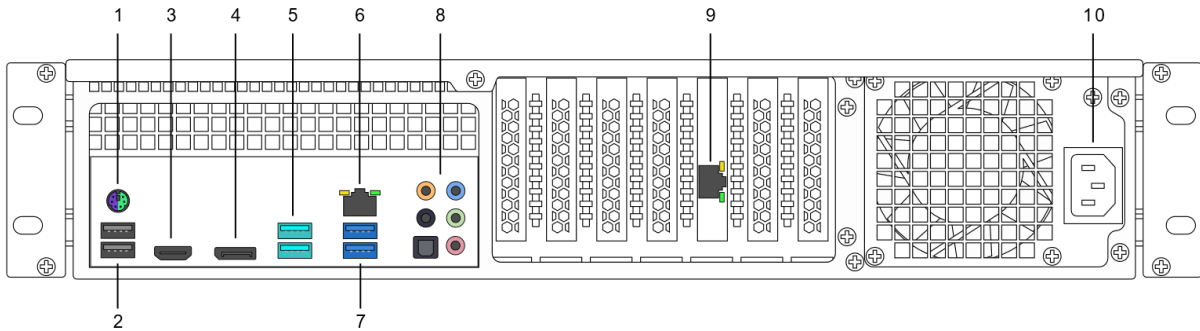
Connectors

Front Panel



1. **USB 3.0 Ports**
2. **System Reset Switch**
3. **HDD Activity LED**
4. **Power LED**
5. **LAN1 and LAN2 Activity LED.** Not connected
6. **Power Button**

Rear Panel



1. **PS/2 Mouse / Keyboard Port**
2. **USB 2.0 Ports**
3. **HDMI 1.4b**
4. **Display Port 1.4**
5. **USB 3.2 Gen2 Type-A Port**
6. **LAN RJ-45 Port**

LAN port LED Indications

Activity / Link LED		Speed LED		Activity Link LED Speed LED LAN port
Status	Description	Status	Description	
Off	No link	OFF	10Mbps connection	
On	Linked	ORANGE	100Mbps connection	
Blinking	Data activity	GREEN	1Gbps connection	

7. **USB 3.2 Gen1 Type-A Ports.**
8. **Audio Ports.**

Audio 2, 4, 5.1 or 7.1 Channel Configuration

Port	Headset / 2 Channel	4 Channel	5.1 Channel	7.1 Channel
Light Blue	Line In	Line In	Line In	Side Speaker Out
Lime	Front Speaker Out	Front Speaker Out	Front Speaker Out	Front Speaker Out
Pink	Mic In	Mic In	Mic In	Mic In
Orange	-	-	Center / Sub Woofer	Center / Sub Woofer
Black	-	Rear Speaker Out	Rear Speaker Out	Rear Speaker Out

The audio stack also includes an optical S/PDIF output for digital audio out.

9. **LAN RJ-45 Port.** (10Gb port in 10G variant)
10. **Power IEC.** Mains Power Input: 100 – 240V~, 6.5 – 3.5A, 50 – 60Hz

Internal Expansion

- 1 x M.2 Socket 3 with M key, type 2242/2260/2280 storage devices support (PCIe x4 Gen3 mode)
- 1 x M.2 Socket 3 with M key, type 2242/2260/2280/22110 storage devices support (both SATA & PCIe x4 Gen3 mode)
- 2 x 2.5" Drive bays (SATA), Supports RAID 0 and RAID 1
- 2 x 3.5" Drive bays (SATA), Supports RAID 0 and RAID 1

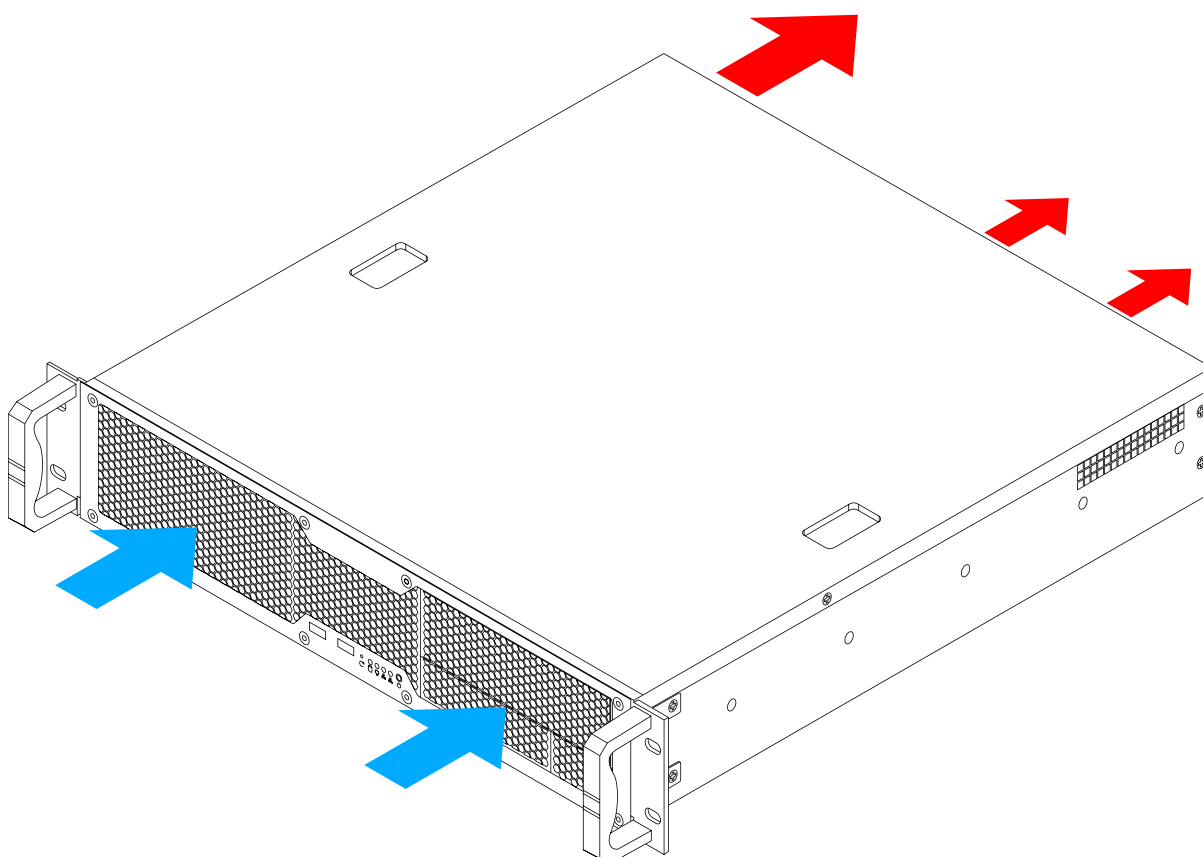
Chassis Specification

The DVS 2U EXEC is a two rack unit high chassis, designed to fit in standard 19" rack cabinets. Optional rack rails are available for the system.

Colour	Silver, Black Front
Dimension (D x W x H)	457.2 x 430 x 88.1 (mm) , 18" x 16.9" x 3.5"
Drive Bay	<ul style="list-style-type: none"> • Exposed: 1 x 5.25" + 1 x 3.5" • Internal: 2 x 3.5", 2 x 2.5"

Ventilation

The 2U EXEC is a rack mountable server, all cool air intake is from the front of the chassis and all hot air is actively expelled from the rear of the chassis. The chassis is designed to be in a climate-controlled server room environment.



Supported Video Formats

The system comes with Windows installed as standard. Windows includes Windows Media Player by default. As of Windows Media Player 12 the following video formats are supported:

- Windows Media formats (.asf, .wma, .wmv, .wm)
- Windows Media Metafiles (.asx, .wax, .wvx, .wmx)
- Windows Media Metafiles (.wpl)
- Microsoft Digital Video Recording (.dvrms)
- Windows Media Download Package (.wmd)
- Audio Visual Interleave (.avi)
- Moving Pictures Experts Group (.mpg, .mpeg, .m1v, .mp2, .mp3, .mpa, .mpe, .m3u)
- Musical Instrument Digital Interface (.mid, .midi, .rmi)
- Audio Interchange File Format (.aif, .aifc, .aiff)
- Sun Microsystems and NeXT (.au, .snd)
- Audio for Windows (.wav)
- CD Audio Track (.cda)
- Indeo Video Technology (.ivf)
- Windows Media Player Skins (.wmz, .wms)
- QuickTime Movie file (.mov)
- MP4 Audio file (.m4a)
- MP4 Video file (.mp4, .m4v, .mp4v, .3g2, .3gp2, .3gp, .3gpp)
- Windows audio file (.aac, .adt, .adts)
- MPEG2 TS Video file (.m2ts)

**Additional video formats can be supported by the installation of additional software.*